

Dolphin CT50 Computer - Configuration Guide

What are the options available on the Dolphin CT50?



CT50 Android 4G

CT50LUN-CS13SE0

Android 4.4.4 KitKat/GMS, LTE (4G), UMTS/HSPA+ (3G), GSM/GPRS/EDGE, 802.11 a/b/g/n/ac, 1D/2D Imager (N6600), 2.26 GHz Quad-core, 2GB/16GB Memory, 8MP Camera, BT 4.0, NFC, Battery 4,060mAh, Global

CT50 WEH8.1 4G

CT50LUN-CS11SE0

Windows Embedded 8.1 Handheld, LTE (4G), UMTS/HSPA+ (3G), GSM/GPRS/EDGE, 802.11 a/b/g/n/ac, 1D/2D Imager (N6600), 2.26 GHz Quad-core, 2GB/16GB Memory, 8MP Camera, BT 4.0, NFC, Battery 4,060mAh, Global

CT50 Android WiFi Only

CT50L0N-CS13SE0

Android 4.4.4 KitKat/GMS, 802.11 a/b/g/n/ac, 1D/2D Imager (N6600), 2.26 GHz Quad-core, 2GB/16GB Memory, 8MP Camera, BT 4.0, NFC, Battery 4,060mAh, Global

CT50 WEH8.1 WiFi Only

CT50L0N-CS11SE0


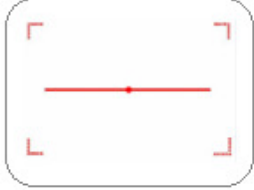
Windows Embedded 8.1 Handheld, 802.11 a/b/g/n/ac, 1D/2D Imager (N6600), 2.26 GHz Quad-core, 2GB/16GB Memory, 8MP Camera, BT 4.0, NFC, Battery 4,060mAh, Global

Honeywell Repair Services

SVCCT50-5LC3

CT50, Limited Comprehensive, 5 Day Turnaround, 3 Year, DayOne

Dolphin CT50 Configuration Map

Bluetooth/ WiFi	WWAN	NFC	I	Camera	Imager	Memory	Operating System	Battery	Language	Options	Description	Notes
CT50												
L											802.11 a/b/g/n/ac + Bluetooth 4.0	
	U										LTE (4G), UMTS/HSPA+ (3G), GSM/GPRS/EDGE	
	0										No WWAN	
		N									Near Field Communication (NFC)	
			I									
				C							8MP Camera	
					S						1D/2D Imager (N6600)	 
						1					2GB RAM/16GB Flash Memory	
							1				Windows Embedded 8.1 Handheld	
							2				Android 4.4.4 KitKat	China
							3				Android 4.4.4 KitKat/GMS	Google Mobile Services (GMS) certified – Play Store
								S			Standard Battery	Battery Capacity 4,060mAh
									C		China	
									D		Indonesia	
									E		Global	Use for Australia/ New Zealand
									F		US FCC	
									G		Egypt	
									N		India/Malaysia	
									R		Russia	
										0	No Option	

Honeywell Repair Services

CT50 - Limited Comprehensive Program

Specialized Coverage for Light Product Handling

Honeywell repair service programs not only protect your device investment, but also provide predictable repair costs for the duration of your agreement. In addition to repairs, with every depot service we also provide required preventative maintenance, install the latest engineering updates and reload the most up-to-date factory software.

You can take advantage of multiple services programs, including either the Full Comprehensive Program or the Limited Comprehensive Program, based on the product category and product type (general duty, rugged or specialty) of your devices. Or you may prefer the Wear & Tear Program for your Honeywell devices. With each program, you also get comprehensive telephone support and access to the Honeywell Scanning & Mobility online Technical Support Portal for product information.

Ensure business continuity, workflow performance and protection of your technology investments with Honeywell Repair Services — now available in over 70 countries with global pricing and global standards of quality.

A comprehensive program designed for the unique needs of light product handling solutions. The Limited Comprehensive program provides coverage for accidental damage and hardware failure.

Service Overview

- Comprehensive coverage (excluding device replacement) that covers accidental damage, wear and tear, damaged accessories, product defects, failures, and any other damage sustained when the device is used as intended in the work environment. (Coverage for eligible accessories includes damaged styluses, battery door covers, screen protectors, and hand straps or clips when included with equipment for service.)
- Locked-in pricing for coverage for up to three years from the initial hardware purchase. Note: Limited Comprehensive coverage must be purchased within 30 days of hardware purchase.
- Telephone-based technical support.
- Access to the Honeywell Scanning & Mobility online Technical Support Portal for the latest product and application support information.
- Convenient Online Return Authorization Requests with 24/7 access to online service history reports.
- Depot services include free preventative maintenance, installation of the latest engineering updates and re-loading of the current factory software (or your preferred version).

Part#	Description
SVCCT50-5LC3	CT50, Limited Comprehensive, 5 Day Turnaround, 3 Year, DayOne
SVCCT50-5LC5	CT50, Limited Comprehensive, 5 Day Turnaround, 5 Year, DayOne
SVCCT50-2LC3	CT50, Limited Comprehensive, 2 Day Turnaround, 3 Year, DayOne

	WARRANTY	WEAR AND TEAR	LIMITED COMPREHENSIVE	FULL COMPREHENSIVE
Device Replacement	N	N	N	Y
Accidental Damage	N	N	Y	Y
Wear	N	Y	Y	Y
Hardware Defect	Y	Y	Y	Y
Turn Around Time	15 Days*	2 & 5 days	1, 2 & 5 days**	1, 2 & 5 days**
Duration	1 year	1, 3 & 5 Years	3 & 5 Years	3 & 5 Years

* Not guaranteed
** 1 day turn on select scanners

Dolphin CT50 Scanning

Option 1 – Scan Handle

Use for Scan intensive applications



Part Number	Description
1 CT50-SCH	User installable scan handle for scan intensive applications. Easy on and Easy off to allow for recharging in CT50 desktop docks.

Dolphin CT50 Desktop Communications

Option 1 – Portable

USB Communication OR Snap-On Charging



Part Number	Description	
1	CT50-USB	Snap-on cup with Standard Type A connector.
2	213-029-001	Kit includes AC Power Adapter Kit (US, EU, UK, ANZ) & USB Cable

Option 2 – Fixed

USB and optional Ethernet Communication & Single Battery Charger



Part Number	Description	
1	CT50-HB-0	HomeBase - Kit includes Dock & Power Supply, must order Power Cord separately
OR	CT50-EB-0	eHomeBase – Ethernet Kit includes Dock & Power Supply, must order Power Cord separately
2	321-576-004	Cable Assembly - USB Type A to Type B
3	**	AC Power Cord – See Page 11 for Country Specific Power Cords

Dolphin CT50 Vehicle Install

Option 1 – Portable/ Sub Contractor Install

Simple Vehicle Charging, portable between vehicles



Part Number	Description
1 CT50-MC	Snap-on cup with Cigarette Lighter plug.

Option 2 – Portable/ Sub Contractor Install

Windscreen Suction Cup Mount, portable between vehicles.



Part Number	Description
1 CT50-MB-1	Vehicle Dock w/ hard wired 3-pin power cable and a standard USB Type A cable
2 RAM-B-166-202U	Suction Cup Mount Kit
3 CT50-MC-Cable	Auto Adapter, V-Docks, 3S Circular, RoHS

Honeywell Repair Services

SVCCT50ACC-5LC3	CT50 Accessories, Limited Comprehensive, 5 Day Turnaround, 3 Years
-----------------	--

Dolphin CT50 Vehicle Install

Option 3 – Fixed Vehicle Install with Direct Connection to Vehicle Battery/ Fuse Block

Best used when the vehicle input voltage varies, 10- 30V.



Rear View
CT50 Vehicle Dock

	Part Number	Description
	1	CT50-MB-0 Vehicle Dock w/ hard wired 3-pin power cable and a standard USB Type A cable.
	2	226-109-003 72" (182.88 cm) Fuse block Power Cable with spade lugs and 3-pin connector
	OR	226-109-004 22" (55.8 cm) Fuse block Power Cable with spade lugs and 3-pin connector
	3	805-611-001 Mounting Kit, V-Dock RoHS
Optional	203-803-001	Vehicle Dock Fuse Block Power Kit RoHS (Provides connection to vehicle fuse block). Requires Power Cable (226-109-003 or 226-109-004).

Honeywell Repair Services

SVCCT50ACC-5LC3 CT50 Accessories, Limited Comprehensive, 5 Day Turnaround, 3 Years

Dolphin CT50 Vehicle Install

Option 4 – Fixed Vehicle Install with DC/DC Converter

Best used when the vehicle input voltage varies, 6-60V or 15-96V.



Rear View
CT50 Vehicle Dock

Part Number	Description
1	CT50-MB-0 Vehicle Dock w/ hard wired 3-pin power cable and a standard USB Type A cable.
2	203-808-001 DC/DC Converter Kit, 6-60V DC, RoHS
OR	203-809-001 DC/DC Converter Kit, 15-96V DC RoHS
3	805-611-001 Mounting Kit, V-Dock RoHS

Honeywell Repair Services

SVCCT50ACC-5LC3 CT50 Accessories, Limited Comprehensive, 5 Day Turnaround, 3 Years

Dolphin CT50 Charging and Communications

Option 1 – CT50 Quad Charger

Chargebase – Quad Dock Charge Only
 Netbase – Quad Dock with Ethernet



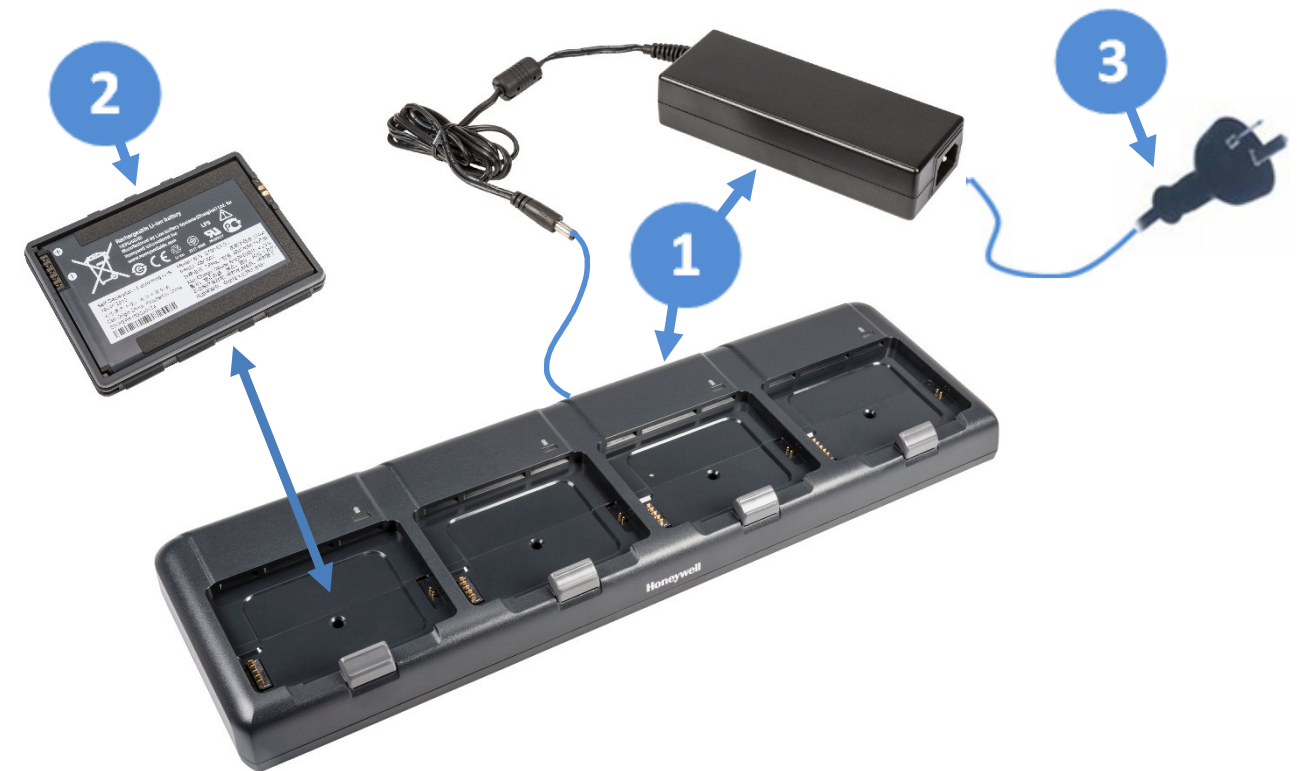
Part Number	Description
1	CT50-CB-0 Chargebase - Kit includes Dock and Power Supply
OR	CT50-NB-0 Netbase - For Ethernet comms and recharging upto 4 computers.
2	** AC Power Cord – See Page 11 for Country Specific Power Cords

Honeywell Repair Services

SVCCT50ACC-5LC3 CT50 Accessories, Limited Comprehensive, 5 Day Turnaround, 3 Years

Option 2 – Battery Charger

Charge up to 4 batteries simultaneously



Part Number	Description
1	CT50-QBC-0 Quad Battery Charger - Kit includes Dock and Power Supply
2	318-055-001 Replacement Battery for CT50
3	** AC Power Cord – See Page 11 for Country Specific Power Cords

Honeywell Repair Services

SVCCT50ACC-5LC3 CT50 Accessories, Limited Comprehensive, 5 Day Turnaround, 3 Years

Miscellaneous

CT50 Accessories



Part Number

Description

213-049-001

Pack of three CT50 replacement handstraps



Part Number

Description

213-048-001

Pack of five CT50 replacement styluses.



Part Number

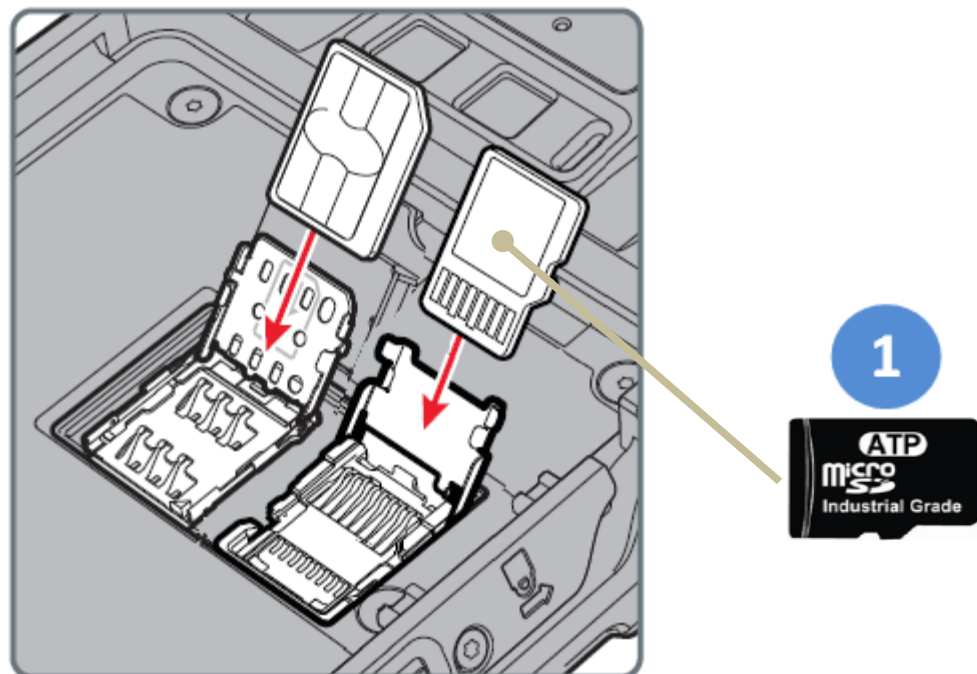
Description

825-238-001

CT50 Holster

Miscellaneous

Honeywell Recommended – ATP Industrial Grade Micro SD Cards



Part Number	Description
1 856-065-004	MICRO-SD CARD, 1GB , AF1GUDI, ROHS
OR 856-065-005	MICRO-SD CARD, 2GB , AF2GUDI, ROHS
OR 856-065-006	MICRO-SD CARD, 4GB , AF4GUDI, ROHS
OR 856-065-007	MICRO-SD CARD, 8GB , AF8GUDI, RoHS

Why ATP Industrial Grade SD?

ATP's SIP (System-In-Packaging) manufacturing process encapsulates all exposed components and points of failure to ensure the products are fully waterproof, shockproof, and ESD (Electro-Static Discharge) proof. ATP Industrial Grade SD/SDHC Cards can withstand at least an operating/storage temperature range of at least -40 to 85 degrees Celsius. In addition to this temperature range, the cards are completely waterproof, dustproof, and ESD (Electro-Static Discharge) proof. All ATP Industrial Grade SD/SDHC cards are produced under a stringent RoHs and Green Package compliant manufacturing process to guarantee a consistent high level of build quality and performance. ATP Industrial SD cards deliver outstanding performance with read speed (seq) up to **18MB/sec** and write speed (seq) up to **16MB/sec**. All ATP Industrial Grade CF, SD, USB drives, and SSDs are constructed using best-in-class SLC(Single-Level Cell) components with enhanced Error Correction Code(ECC) functions and wear levelling algorithms. This results in MTBF ratings over 2 million hours and the highest write cycle lifetimes in the industry.

AC Cords

Part Number	Description
9000097CABLE	AC Power Cord, Australia
071918	AC Power Cord, China
9000091CABLE	AC Power Cord, Denmark
9000090CABLE	AC Power Cord, Europe
321-502-002	AC Power Cord, India & South Africa
9000092CABLE	AC Power Cord, Italy
321-500-002	AC Power Cord, Japan
9000093CABLE	AC Power Cord, Switzerland
9000094CABLE	AC Power Cord, United Kingdom
1-974028-025	AC Power Cord, United States

Disclaimer

Honeywell International Inc. ("HII") reserves the right to make changes in specification and other information contained in this document without prior notice, and the reader should in all cases consult HII to determine whether any such changes have been made. The information in this publication does not represent a commitment on the part of HII.

HII shall not be liable for technical or editorial errors or omissions contained herein; nor for incidental or consequential damages resulting the furnishing, performance, or use of this material.

This document contains proprietary information that is protected by copyright. All rights are reserved. No part of this document may be photocopied, reproduced, or translated into another language with-out prior written consent of HII.

Web Address: www.honeywellaidc.com

The Bluetooth trademarks are owned by Bluetooth SIG, Inc., U.S.A and licensed to Honeywell.

Other product names mentioned in the manual may be trademarks of registered trademarks of their respective companies and are the property of their respective owners.

© 2015 Honeywell International Inc. All rights reserved.