



INNOVATIVE TECHNOLOGY FOR IMPROVED BUSINESS OUTCOMES

Humanscale[®]

CORE PRODUCT GUIDE





Sektor specialises in delivering innovative and efficient technologies for the retail, networking, security, healthcare, ergonomics and mobility markets. Our passionate, dedicated and deeply knowledgeable team is second to none, offering unparalleled industry and technology expertise to help our partners build winning solutions for their customers.

Humanscale[®]

Since their founding, Humanscale has pioneered the healthy, active workspace.

Humanscale is the premier designer and manufacturer of ergonomic products that improve health and comfort at work. They believe the best designs in the world are based on purpose and function, and for this their innovations have been honoured with more than 200 prestigious awards since 2007. If a design solves a functional problem as simply and elegantly as possible, the resulting form will be honest and timeless.

Sustainability of both design and materials is at the heart of what they do, and they solve functional problems as simply and elegantly as possible while consuming less of the Earth's limited resources.

TABLE OF CONTENTS

MONITOR ARMS

M2.1 / M8.1 / M8.1 CROSSBAR

M/FLEX

M/CONNECT2 DOCKING STATION

SEATING

WORLD TASK CHAIR

LIBERTY CHAIR

SMART OCEAN CHAIR

DIFFRIENT SMART CHAIR

FREEDOM HEADREST & FREEDOM TASK CHAIR

OCCASIONAL SEATING

SEATING TEXTILE DESIGN

SIT/STAND

SIT/STAND WORKSTATIONS

SIT/STAND DESKS

OFFICE ERGONOMICS

LIGHTING

WARRANTY

4

6

7

8

10

11

12

13

14

15

17

18

19

20

22

23

MONITOR ARMS



MONITOR ARMS

Featuring innovations like their patented Weight-Compensating Spring Technology and Smart Stop functionality, Humanscale monitor arms are designed to enable the personalisation and flexibility needed for today’s evolving workplaces.

M2.1

Standard single or dual monitors
2.2 kg- 7kg



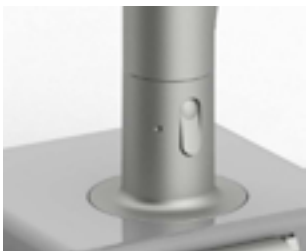
M8.1

Heavy single or dual monitors
2.2kg - 12.7kg



KEY FEATURES

1. Quick release joints



2. Smart stop at 90, 180 or 360 degrees



3. Built in tools for easy installation



4. Stops desk overhang, ideal for smaller desks



5. Rubberized Cable Management makes it simple to run cords through a modular system for a clean, sleek and organised aesthetic



6. Counter-balance indicator



MONITOR ARMS



MONITOR ARMS - DYNAMIC ADJUSTABILITY

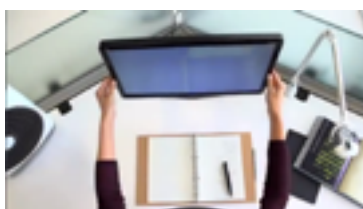
There's no time for discomfort in today's fast-paced, fully connected digital world.

Humanscale ergonomic monitor arms are dynamic adjustable, for instant personalisation of the workspace by the user for improved comfort, health, and productivity.

Height



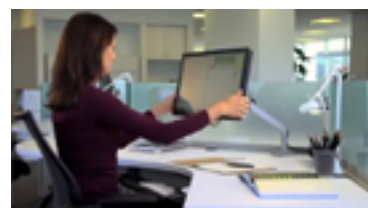
Depth



Horizontal tilt



Vertical tilt



MONITOR ARMS



M2.1

The articulating arm offers effortless height and depth adjustment and supports a wide range of flat-panel screens that weight up to 7.5kgs.



M21CMWBTBAU
M2.1 Arm Light with Clamp Mount in Polished Aluminium with White Trim



M21CMBBTB
M2.1 Arm Light with Clamp Mount in Black with Black Trim

M8.1

The dynamic and effortless heavy-duty monitor arm designed to hold one monitor weighing 3.5-18kgs, or the M8 w/Crossbar with two monitors up to 9kg each.



M81CM-W
M8.1 Arm with Clamp Mount in Aluminium/White



M81CMBBTB-IND.AUS
M8.1 Arm with Clamp Mount in Black with Black Trim

M8.1 W/CROSSBAR

The M8 with Crossbar is designed to hold two monitors. Each monitor weighing up to 9kg each.



M81CMWB2B-IND.AUS
M8.1 Dual-Monitor Arm with Clamp Mount in Aluminium/White



M8CB1C-IND
M8.1 Dual Arm Clamp in Black with Black Trim

MONITOR ARMS



MONITOR ARMS - M/FLEX

M/Flex, Humanscale’s multi-monitor arm system, can go from one to six monitors in minutes, without the need for tools. M/Flex can integrate with any standard work surface through a wide number of attachments on a single post, seamlessly transforming a traditional workspace into a dynamic, ergonomic workstation. As monitors continue to evolve, M/Flex’s versatility makes it the perfect multi-monitor solution for a changing technology landscape.



X2BCMWTBETB12-IND.
AUS

M/FLEX with M2.1 arms, Dual Monitor,
Straight Link/Dynamic Link Light,
Polished Aluminium with White Trim



X2CCMWNTBFTBFTB12

M/FLEX with M2.1 arms, Triple Monitor,
Straight Link/Dynamic Link Light,
Polished Aluminium with White Trim

Many other configuration options available



X2BCMWTBETB---24--X2B-
NMWETBETB---NP

M/FLEX with M2.1 arms, Quad Monitor,
Straight Link/Dynamic Link Light,
Polished Aluminium with White Trim

Many other configuration options available

MONITOR ARMS - ACCESSORIES



NOTEBOOK
HOLDER

M2NHS
Silver

NB. additional adapter needed for
MX to MX.1 (VESA1-A-B)



WALL
MOUNT

M2HWW



BOLT-
THROUGH
MOUNT

1907511059NL

M/CONNECT2 DOCKING STATION



M/CONNECT2 DOCKING STATION

The M/Connect2 USB-C*, dual-video docking station is a unique innovation that merges ergonomics and technology. M/Connect2 gives easy access to user ports and conceals IT ports to eliminate cable clutter.

The monitor arm dock improves comfort, health, and productivity while offering instant use of all devices through universal Plug and Display™ device usage.

*Backwards compatible with USB-C to USB-A adapter included.

M/Connect2 Takes cables from
on the desk to **off** the desk



M8.1 Dual white, M/
Connect2, standard desk
clamp with M8.1 handle.

Typical NEW setup.



M/Connect 2
Stand Alone Split Dock

*Retrofit for exiting
Humanscale monitor arms*



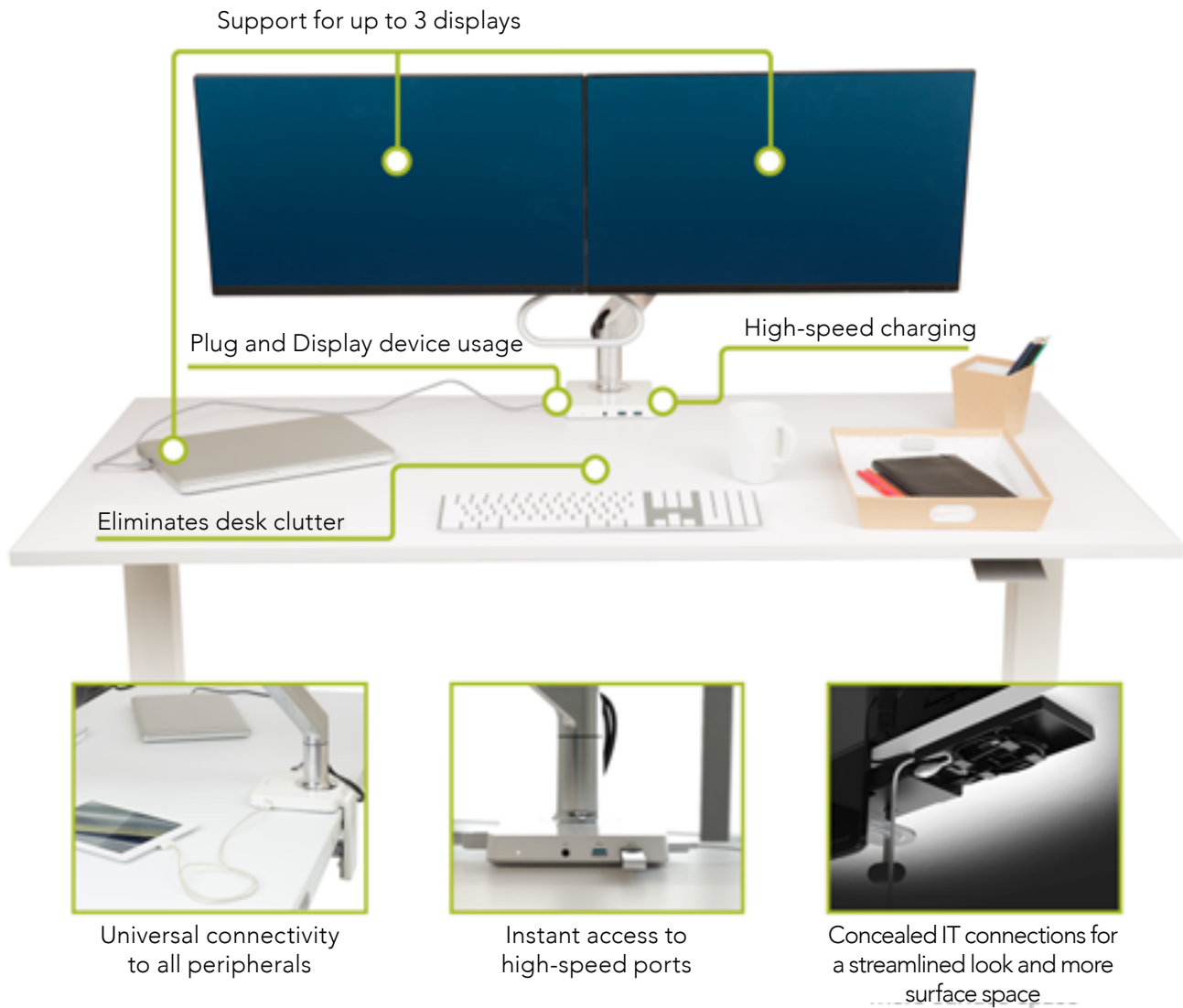
1908321025WH01
Polished Aluminium with White Trim



1908321025BL01
Black

M/CONNECT2 DOCKING STATION

M/CONNECT2 - KEY FEATURES



BEFORE & AFTER



WORLD TASK CHAIR



WORLD TASK CHAIR

Simplicity is at the core of every Humanscale products. Each design is incredibly easy to use with the fewest parts and controls possible. The Diffrient World Task chair features an unprecedented combination of performance, sustainability and simplicity.

Easy, automatic adjustments for the user - minimal maintenance - 15 years warranty on components

1. Mechanism-free recline action provides automatic, balanced support at all points throughout recline

2. Form-Sensing Mesh Technology features tri-panel, non-stretch mesh construction for body-hugging comfort



3. Low-abrasion mesh protects clothing while providing ultimate breathability

4. Upholstered mesh seat cushion provides totally unique sitting experience



W10BM10O001.AUS

Black Frame with Black Trim
Monofilament Stripe Back Mesh in Black
Oxygen Textile in Inhale (Black) Seat

W11BM10O001

Adjustable Duron Arms
Black Frame with Black Trim
Monofilament Stripe Back Mesh in Black
Oxygen Textile in Inhale (Black) Seat

LIBERTY CHAIR



LIBERTY CONFERENCE/TASK CHAIR

The Liberty Task chair is an intelligent mesh task chair engineered to provide automatic lumbar support for every user, as well offering simplicity and complete ease of use. Liberty was designed to offer a unique, minimal aesthetic and to provide custom comfort.



L110BM10O001

Armless

Black Frame

Monofilament Stripe Back Mesh in Black

Oxygen Textile in Inhale (Black) Seat



L111BM10O001

Adjustable Duron Arms

Black Frame

Monofilament Stripe Back Mesh in Black

Oxygen Textile in Inhale (Black) Seat



L111AM10O001

Adjustable Duron Arms

Polished Aluminium Frame with Black Trim

Monofilament Stripe Back Mesh in Black

Oxygen Textile in Inhale (Black) Seat

LIBERTY DRAFTING CHAIR

The Liberty Drafting Chair, provides the same ergonomic features and comfort as the Liberty Chair, with an even greater height range and a foot ring for use at a drafting table or standing desk.



L11BM10O001F

Adjustable Duron Arms

Black Frame

Monofilament Stripe Back Mesh in Black

Oxygen Textile in Inhale (Black) Seat

8" High Cylinder with 18" Trivalent
Chrome Foot Ring



L111AM10O001

Armless

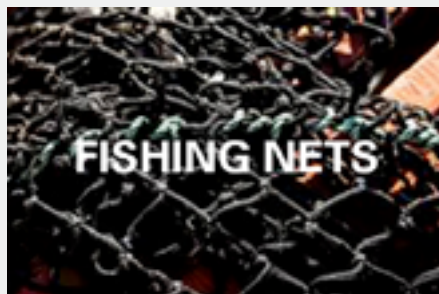
Black Frame

Monofilament Stripe Back Mesh in Black

Oxygen Textile in Inhale (Black) Seat

High Cylinder with 18" Trivalent Chrome Foot
Ring

SMART OCEAN CHAIR



SMART OCEAN CHAIR

Incorporating almost 1 kilogram of recycled NetPlus material, Smart Ocean is the embodiment of Humanscale's commitment to sustainable manufacturing.

The material is from discarded ocean fishing nets collected and recycled by Bureo, an emerging venture developing innovative solutions to prevent ocean plastic pollution. The nets are transformed into plastic pellets and then used to manufacture Smart Ocean chairs. Smart Ocean is the first-ever ergonomic chair to be built with recycled net and is also certified by the International Living Future Institute to the full Living Product Challenge — meeting the most rigorous sustainable manufacturing criteria to date.

Featuring the same Form-Sensing Mesh Technology and transparent functionality as the Diffrient Smart chair, Smart Ocean instantly adjusts to each unique user — as if each chair was made for them. With an aesthetic driven by functionality, Smart Ocean has a timeless beauty that's universally relevant in any workspace.



S113BM10O001

Adjustable Duron Arms

Black Frame with Black Trim incorporating Ocean Netting
Monofilament Stripe Back Mesh in Black
Oxygen Textile in Inhale (Black) Seat



S113CM10O001

Adjustable Duron Arms

Black Frame with Polished Aluminium Trim incorporating
Ocean Netting
Monofilament Stripe Back Mesh in Black
Oxygen Textile in Inhale (Black) Seat

DIFFRIENT SMART CHAIR

DIFFRIENT SMART CHAIR

The Diffrient Smart chair is an intelligent mesh task chair with a striking linear aesthetic that complements any environment. Engineered to provide automatic lumbar support for every user, as well as simplicity and ease of use, Diffrient Smart offers comfort, style and flexibility.

Diffrient Smart was created by designer Niels Diffrient and, like the Liberty and Diffrient World chairs, uses Humanscale's revolutionary Form-Sensing Mesh Technology and mechanism-free recline for perfect support for every user.



SMART CHAIR Armless

S410BM10O001

Armless

Black Frame with Black Trim

Monofilament Stripe Back Mesh in Black

Oxygen Textile in Inhale (Black) Seat



SMART CHAIR w Adjustable Duron Arms

S413BM10O001

Adjustable Duron Arms

Black Frame with Black Trim

Monofilament Stripe Back Mesh in Black

Oxygen Textile in Inhale (Black) Seat

FREEDOM HEADREST & FREEDOM TASK CHAIR



FREEDOM HEADREST & FREEDOM TASK

The Freedom chair uses the laws of physics and the sitter's body weight to provide instant, custom support for every sitter. This perfect balance allows the user to effortlessly move, but be fully supported in each position. As a result, users change postures often, which leads to a more healthy and comfortable sitting experience.



FREEDOM HEADREST

F21MAQ111N

Standard Gel Arms w Textile
Polished Aluminium Frame
Bizon Leather in Black



FREEDOM HEADREST

F211GO001

Standard Duron Arms
Graphite Frame
Oxygen Textile in Inhale (Black)



FREEDOM TASK

F111GO001

Standard Duron Arms
Graphite Frame
Oxygen Textile in Inhale (Black)

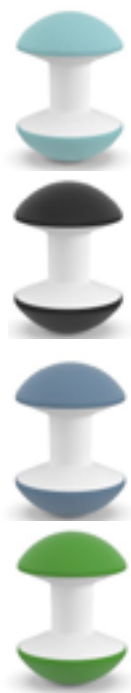
OCCASIONAL SEATING - STOOLS



BALLO STOOL

Ballo is designer Don Chadwick’s vision of what a multipurpose stool should be—fun, engaging and perfect for short-term, active sitting in the home or office. With a compact central column and lightweight air-filled domes, Ballo is an imaginative take on traditional ball chairs, supporting flexibility and freedom of movement.

Available in a variety of vibrant colours, Ballo has a dynamic nature that allows it to integrate into a wide range of environments.



B10SW - Sky Blue

B10BW - Black

B10UW - Blue

B10EW - Green



B10YW - Yellow

B10GW - Grey

B10RW - Red

PONY SADDLE STOOL

Part of Humanscale’s award-winning Freedom seating line, the Pony task stools are the most comfortable, versatile and ergonomic stools ever made. The compact Pony Saddle makes sitting comfortable and workplace movement simple while complementing any workspace or home office. The triangular cushion of the Pony saddle encourages users to sit in a “saddle” posture. Sitting in this position lowers the thighs, opens up the hips and allows for increased circulation. The posture also reduces pressure points on the tail bone enabling long-term comfort.



F400GK101

Pony Saddle Seat, Casters
Graphite Base
Black Lotus

OCCASIONAL SEATING

CINTO

Style, comfort and utility come together in the Cinto chair, a stackable office chair that breaks the number one rule for stacking chairs: it's comfortable. Like Humanscale's ergonomic task chairs, Cinto was built to support the human body by minimizing pressure points and discomfort.



C15B10

Cinto with Four Legs, Glides
Fixed Arms
All Black

C15S15

Cinto with Four Legs, Glides
Fixed Arms
Silver/Grey

DIFFRIENT OCCASIONAL - LIBERTY CHAIR

Diffrient Occasional is a stackable multipurpose chair that is suitable for a variety of office and group settings. A strong, linear backrest made with proprietary non-stretch mesh creates a three-dimensional form — fitting the user like a perfectly tailored shirt.



O1BM10O001--

Black with Black Trim
Monofilament Stripe Black
Oxygen Inhale
Standard Plastics & Foams

O1TM10O001--

Chrome 3 with Black Trim
Monofilament Stripe Black
Oxygen Inhale
Standard Plastics & Foams

TREA

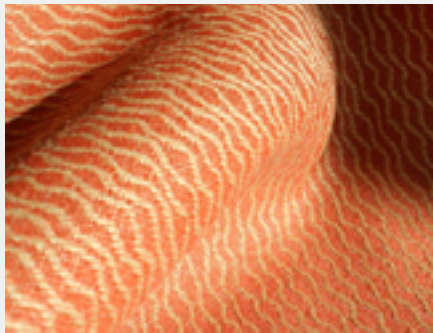
The Red Dot-Award winning Trea teams a timeless, clean aesthetic with high-performance function. Created in collaboration with visionary designer Todd Bracher, Trea offers intuitive comfort by mimicking the instinctive recline of the human body and embracing the sitter in a supportive shell.



100WWWG

Trea with Four Legs
Armless
White

SEATING TEXTILE DESIGN



SEATING TEXTILES DESIGN

Just as Humanscale chair's recline mechanism allows sitters to change from posture to posture without the use of locks or levers, the cushion must also facilitate freedom of movement.

Two types of textiles are used on Humanscale chairs: mesh and upholstery. These have been exclusively designed for Humanscale by partnerships with some of the most respected textile designers in the world, to create fabrics that perfectly complement the functionality.

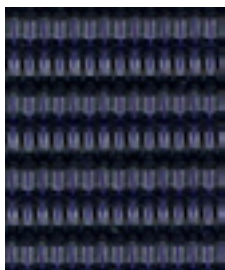
DESIGNERS



Elizabeth Whelan

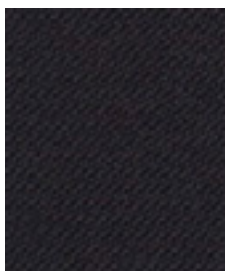


Lori Weitzner



MONOFILAMENT STRIPE

Made specifically for our tri-panel, mesh-backed chairs, Monofilament Stripe has an elastic composition that achieves strength through its distinctive weave structure to provide unmatched support. Its classic stripe pattern is available in various striking colors.



OXYGEN

Oxygen is a subtly textured lighter weight dobby weave fabric with high wool content which can breathe new life into a wide range of commercial interiors. It offers a color palette comprising softened pastel hues and fresh vibrant shades, while maintaining high performance and abrasion resistance.



BIZON LEATHER

Exceptionally soft to the touch, Bizon is a thick, rich grained leather with excellent light fastness. It offers a plain, pigmented finish that has excellent stain protection, making it ideal for any user or application. Leather Grade 1

SIT/STAND WORKSTATIONS



QUICKSTAND ECO

The QuickStand Eco has a simple installation making it easier than ever to integrate movement into your work day.



QSEWD
Dual-Monitor, Freestanding,
Aluminium/White



QSEBD
Dual-Monitor, Black

QUICKSTAND

QuickStand seamlessly transforms any fixed-height desk into an active one; as the screen and keyboard are placed in an ergonomically correct position for the user.



QSWC30CHHINDAUS
Dual-Monitor, Clamp, Aluminium/White.
HDMI and power cables pre-installed

SIT/STAND DESKS



FLOAT

A revolutionary standing office desk that brings effortless operation to traditional sit/stand products - users simply tap an innovative counterbalance mechanism to find the ideal height and comfort.
(Tops sold separately).



FNWR63—White

FNSR63—Silver

Base width 1450mm; Feet depth 685mm
Suitable for tops over 1500mm wide and 750 deep



FNWR62—White

FNSR62—Silver

Base width 1450mm; Feet depth 685mm
Suitable for tops over 1500mm wide and 750 deep



FNWR43—White

FNSR43—Silver

Base width 1200mm; Feet depth 685mm
Suitable for tops over 1250mm wide and 750 deep

FNSR42—White

FNWR42—White

Base width 1200mm; Feet depth 530mm
Suitable for tops over 1250mm wide and 575 deep

OFFICE ERGONOMICS



6G KEYBOARD SYSTEM

Humanscale patented keyboard systems have effortless height and angle adjustment and are solidly anchored to any work surface.



MSHU6G90011DF22

CPU HOLDERS



CPU600B
Black



CPU600W
White



CPU200B
Black



CPU200W
White

SWITCH MOUSE



SMUSB
White

OFFICE ERGONOMICS

MONARCH MAT

Humanscale Monarch Mat provides long-lasting comfort and support for today’s active professional. An essential component of the ergonomic workstation, this standing mat disperses pressure and increases circulation throughout the lower body.



MONARCHB
Black

MONARCHG
Grey

FOOT MACHINE

Humanscale foot machines get feet moving for health and comfort. Offering relief from prolonged, static sitting by encouraging gentle rocking of the feet, they engage lower leg muscles to increase healthy circulation.



FM300B
Natural

TECH TRAY

The tech tray offers extra workspace and storage, while keeping your hardware protected.



TECHTRAYSTEEL

L6 NOTEBOOK HOLDER

The L6 Notebook Manager dramatically improves user comfort and reduces the risk of long-term injury by promoting good ergonomic posture while using a laptop computer.



L6LAPTOPHOLDER

NEAT TECH (CABLE MANAGEMENT)

NeatTech stores power strips and cables neatly and safely off the floor to protect technology and restore order to the workplace.



NTLGG

NEAT LINK (CABLE MANAGEMENT)

NeatLinks promotes a more organized workspace and gets wires off the floor to keep under-desk areas hazard-free and easy to clean.



- NL24LB Black Large 24inch
- NL24LG Grey Large 24inch
- NL17LB Black Large 17inch
- NL17LG Grey Large 17inch

LIGHTING



HORIZON LED LIGHT

The most celebrated and beautiful table light in the industry, Horizon is a visually striking embodiment of high performance and functionality. Suitable for home, office and hospitality spaces, Horizon's brilliant light throw is powered by Thin Film LED Technology — producing an ultra-wide glare-free footprint that is smooth and even.



HNBUW
Desktop Base
Universal Plug
Arctic White



HNBUB
Desktop Base
Universal Plug
Black

ELEMENT DISC LIGHT

Element Disc task light brings together advanced technology and optimal functionality. An innovative and adjustable LED desk lamp, Element Disc complements any work space, home office or hospitality environment. Using Thin Film LED Technology, Element Disc offers seven levels of brightness with just an effortless pinch of the light head. It also features a PIR occupancy sensor that turns the unit on or off when the user enters or leaves the area.



ECUBW
Desktop Base
Universal Plug
White



ECUBB
Desktop Base
Universal Plug
Black

ELEMENT VISION LIGHT

With cutting edge advancements like MCX LED technology, the Element Vision task light offers a generous foot-print of glare free illumination in a single light source — not commonly found in LED computer lamps.



EVUBB
Desktop Base
Universal Plug
Black

INFINITY LIGHT

Infinity LED task light embodies performance in a sleek, timeless design. Infinity's large-array, multi-chip LED provides long-lasting, high-quality light — casting just one single shadow. In line with the Humanscale philosophy of doing more with less, Infinity is designed from a functional perspective to create a task light that is elegant, enduring and globally appealing.



NF3UBW
Desktop Base
Universal Plug
Linen White

WARRANTY

Humanscale offers the following warranties on its products, subject to any exclusions and limitations as set forth below:

PRODUCT

Customer's Own Material (COM, COL)

Switch Mouse

Technology Products

Element Series Lights

Horizon Series Lights

Diffrient Series Lights

Nova Series Lights

Float Table, (Mechanical)*

eFloat and Electric Float***

QuickStand Sit/Stand Workstation, QuickStand Lite,
QuickStand Eco, QuickStand Underdesk

Fabric/Cushions/Arm Pads

M2.1, M/Flex & Para/Flex Monitor Arms

M8.1 Monitor Arms with Gas Cylinder Components

Ballo Stool**

Vessel Lights†

M/Power

M/Connect 2

Monarch Mat

Office IQ

All other seating and products detailed in a current
Humanscale Price Guide, unless otherwise specified

All other products NOT detailed in a current Humanscale
Price Guide

WARRANTY

No Warranty

1 Year, 24/7 Warranty

3 Years, Limited Warranty

10 Years, 24/7 Warranty

10 Years, 24/7 Warranty

5 Years, 24/7 Warranty

10 Years, 24/7 Warranty

5 Years, 24/7 Warranty

5 Years, 24/7 Warranty

5 Years, 24/7 Warranty

5 Years, Single-Shift Warranty

15 Years, 24/7 Warranty

15 Years, 24/7 Warranty

3 Years, Single-Shift Warranty

10 Years, 24/7 Warranty

3 Years 24/7 Warranty for the power supply driver

3 Years, 24/7 Warranty

3 Years, 24/7 Warranty

3 Years, 24/7 Warranty

1 Year, 24/7 Warranty

15 Years, 24/7 Warranty

Varies; consult your Humanscale representative for details

*Modifying or tampering with any part of the base of the Float Table will render the warranty void. The warranty on the Float Table applies to the base and work surface if the table top is provided by Humanscale, and only to base if the table top is provided by a third-party, provided that the third-party table top meets the following requirements: (i) has a depth of 36" or less, (ii) has a width of 72" or less, and (iii) the total weight load including work surface is no more than 130 lbs for the standard base and no more than 160 lbs for the heavy duty base.

** Note: Ballo is not a task chair. It has not passed the BIFMA or European EN standards for office seating. The Ballo is an exercise chair that is designed for dynamic seating and frequent movement. All Ballo instructions should be followed to ensure a comfortable experience.

*** Modifying or tampering with any part of the base of the eFloat or electric Float will render the warranty void. The warranty on the eFloat and electric Float applies to the base and work surface if the table top is provided by Humanscale, and only to base if the table top is provided by a third-party, provided that the third-party table top meets the following requirements: (i) has a depth of 36" or less, (ii) has a width of 72" or less, and (iii) a total weight load including work surface of no more than 200 lbs.

†The warranties for the Vessel lights exclude labor and other costs associated with the installation and/or removal of the lights from ceilings, walls, fixtures, etc. Further, Humanscale has no warranty obligations if the product is affected by internal or external environmental conditions (including but not limited to water, moisture, outdoor use, or temperature damage), power fluctuations, improper power supply, or if the product is not installed and used in compliance with all applicable standards and electrical codes.

These warranties are available to the original end-user customer only and are non-transferable. For these warranties to be valid, the Humanscale product must have been purchased directly from Humanscale and/or an authorized dealership, distributor, retailer and/or reseller of Humanscale products. If products are procured through an authorized dealership, distributor, retailer and/or reseller, the end-user customer must be registered with Humanscale for the warranty to be in effect. Humanscale warrants that, at the time of customer's receipt, the product will be in good working order and will be free from defects in materials and workmanship for the duration of the warranty term, as set forth above. These warranties do not apply to normal wear and tear or damage caused by accident, neglect, product abuse, misuse and/or failure to follow instructions relating to the product's installation or intended use. Humanscale will not be responsible for damage due to service, maintenance, modifications or tampering by anyone other than a Humanscale authorized representative. Humanscale will not be responsible for injury or damage caused by or associated with the installation and/or use of products in any manner other than in strict conformance with the instructions set forth in its installation manuals and instruction sheets and/or product literature. These warranties do not cover damage caused by a carrier or transportation of the product from one location to another, or alterations made by owner. Humanscale does not warrant damages or defects to the products under the following conditions: an Act of God, damage from electrical power problems, usage of parts or components not supplied by Humanscale, failure to perform preventative maintenance, or damage caused by peripherals not supplied by Humanscale.

For full terms and conditions please visit
<https://www.humanscale.com/about/legal-information/terms-conditions.cfm>

sektor Humanscale®

www.sektor.co